

THE

S


RESOURCE

NEWS, REVIEWS, INFORMATION TO USE

February/March 2020

Volume 6 No. 3

SCALE



**Kitbashed Switch Tower
Denver & Cat Canyon Western Sn3
RIP Track: Improving Brass Trucks
Another Type of Soil Drilling Truck
New Tracks - 2020 NASG Convention
Shows, Meets and so much more...**

Published Bi Monthly

The Model Railroad Resource LLC
407 East Chippewa Street
Dwight, Illinois 60420
815-584-1577

February/March 2020
Volume 6 No. 3

Owner / Publisher
Amy Dawdy

Managing Editor
Daniel Dawdy

Advertising Manager
Jeb Kriigel

Welcome to the online S Scale Resource magazine. The magazine is presented in an easy to use format. The blue bar above the magazine has commands for previewing all the pages, advancing the pages forward or back, searching to go to a specific page, enlarging pages, printing pages, enlarging the view to full screen, and downloading a copy to your computer.

Front Cover Photo

Train No. 32 sits on Mesa siding on James Spice's Sn3 Denver & Cat Canyon Western Railroad

BILL OF LADING

- 2 **Bill Of Lading**
- 3 **From the Publisher's Desk**
- 4 **News You Can Use**
New Items of Interest
- 10 **The Minnesota Heartland Railroad Gets An Update**
By Ken Zieska
- 12 **RIP Track: Improving Brass Trucks**
By Jim Kindraka
- 16 **A Kitbashed Switch Tower**
By Tom Lennon
- 20 **Denver & Cat Canyon Western Railroad**
By James Spice
- 29 **New Tracks: The 2020 Must Attend Event for S Scale Model Builders - "Mentoring Experience Par Excellence"**
By Jim Kellow MMR
- 37 **Another Type of Soil Drilling Truck**
By Joe McGee
- 39 **What's On Your Workbench**
By Jas Millham
- 41 **Show Schedule**
- 42 **Classified Ads**
- 42 **Advertiser Index**



The Model Railroad Resource, LLC publishes *The O Scale Resource* and *The S Scale Resource*. Be sure to look at both of our magazines. There are many articles in our magazines that are not scale specific and will be of interest to you. Click the magazine title in this announcement to see the magazine.

From the Publisher's Desk



With this issue, we are helping to publicize the 2020 NASG Convention that will be held July 7 - 11, 2020 in Minneapolis, Minnesota. It is sponsored and organized by the Pines & Prairies S Scale Workshop. [Their website may be seen here](#). Amy and I plan to be there helping to promote scale S, as well as the magazine.

We firmly believe the the future of S will be scale. Anyone from N and HO who are looking for a larger scale will not settle for hi-rail track and non-scale details any more than they would consider going three rail in O scale. It's these possible new converts that we, The S Scale Resource Magazine, are working on reaching and why we stay a scale only magazine. Please don't take this as bashing anyone. There is nothing wrong with hi-rail if you enjoy and remember it. But it's the future we need to be looking at. Prototype Modelers Meets are one place to show off scale S to the masses. [The O & S Scale Midwest Show](#) is another great place to meet like minded modelers. I can attest to a few O scale people who are taking a good hard look at S scale and rethinking their modeling future.

On another note, earlier in January we sent out an email to people who asked to receive notifications for new issues. (If you are not signed up, please go here: <http://oscaleresource.com/Lists/?p=subscribe&id=1> and never miss a new issue release.) The email was asking for help with articles and information as we were hard pressed to continue to find authors. I was extremely surprised and happy with the response. Many came forward with articles and ideas. We want to thank you all, and if you haven't yet, please considering getting in touch with us. The one surprising bit from this were the people who contacted us. For the most part, we have not seen these people on forums or social media. These are people doing their modeling all over the world and many are not known outside their tight circle of friends. I suspect there are more out there than people realize.

If you have a layout in any stage of work, let us know. We can send out a set of questions for you to answer and have you fill out as best as you can. Not everything needs to be filled out, but the readers get a better feeling about you if you do. From that, Amy writes it up and we send you a copy. Once you see it, you may have a few more additions/corrections. That's all there is other than sending us pictures, the bigger the better. If you would prefer to write your own article, that is fine as well. In that case, the questions may help you get started and provide an outline for your article.

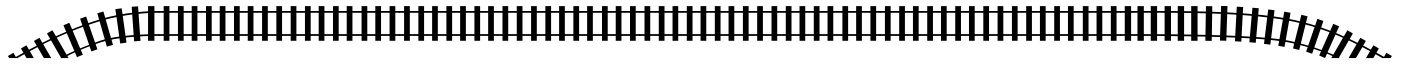
Layout not finished? Are they ever? Construction and updates are what people like to see. Yes, big, beautiful, finished layouts are great to see and we have published a few, but many readers want to know how you got there and what mistakes you made along the way, along with how you fixed them. The same can be said of building or modifying rolling stock.

So, drop us an [Email here](#) and tell us what you are working on.

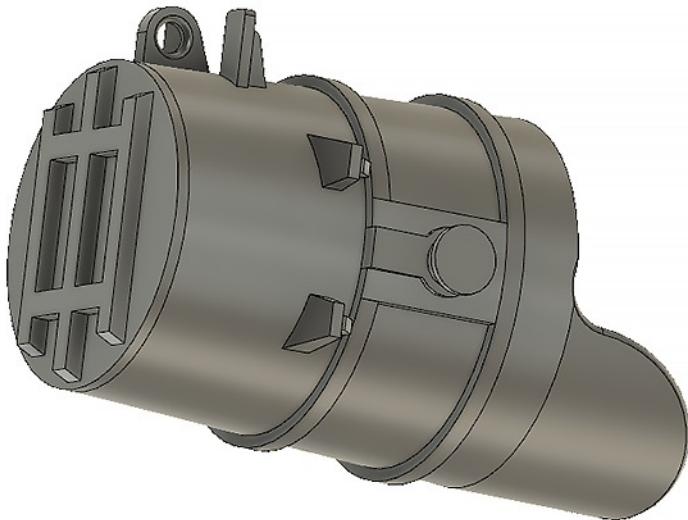
Happy Reading & Happy Modeling,

Dan Dawdy

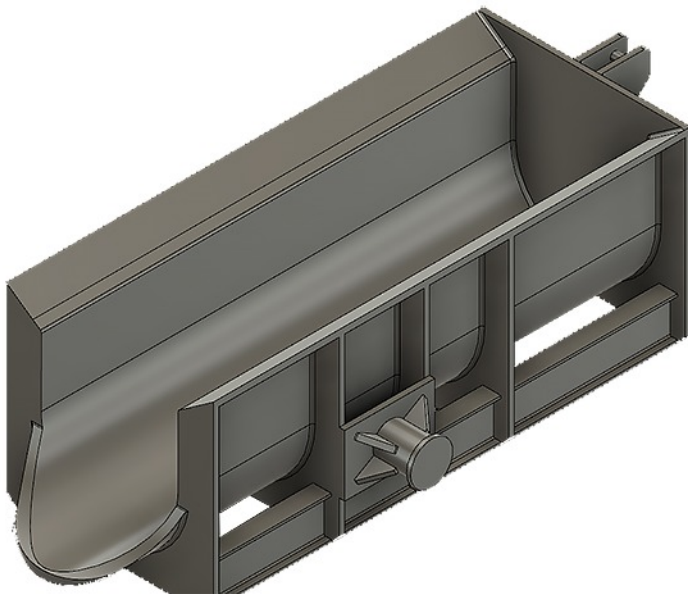
NEWS YOU CAN USE



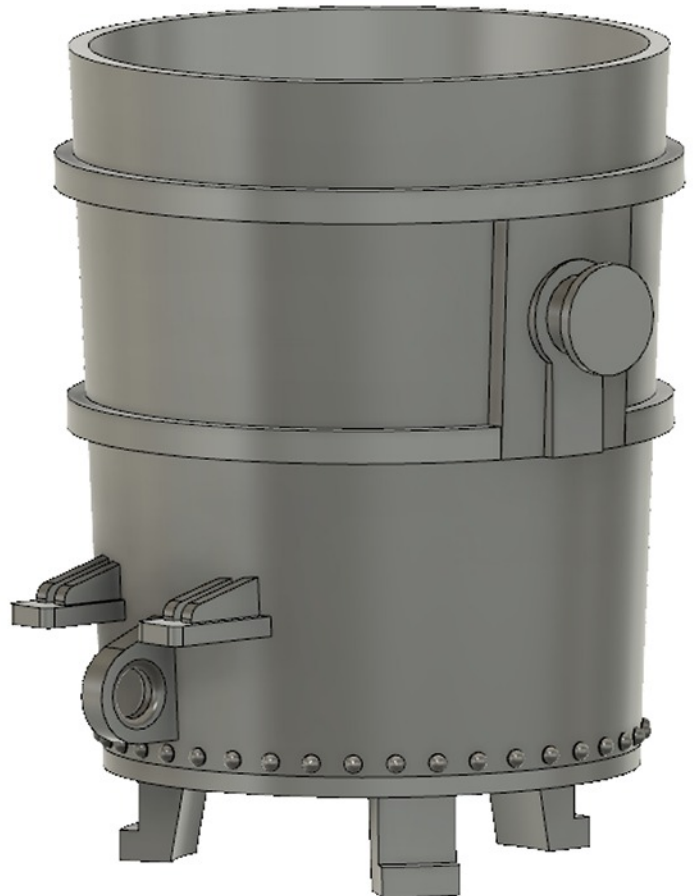
Kevin from [Steel Mill Modelers Supply](#) sent a few ideas for loads and or steel mill modeling.



Modeled after charging ladles in use since the 1950's, these ladles are perfect for everything from your OHF to the giant BOF's of toy.



Prototypically sized. The original design for the specific charging box was by Dean Freytag. Proper trunnions for your J hooks, and rear pin for dumping hoist.



Accurate prototype model of the teeming ladle on display at Youngstown, this ladle is perfect for any Steam or Transition era layout where you need to move hot metal or steel to molds.

[See their Website for more S scale steel mill items and loads.](#)



[S Scale Track Works](#) now has a #6 switch frog in code 83 rail. This item was added to our line by request from modelers. Many requests have come to us for other sizes and other components. We are willing to produce them, but will require a deposit before production. Once we have a minimum order, determined by the complexity of the component, we

Code 83 No. 6 Frog



will add the component to our line. If you are interested, contact us for details.

These components are designed for S Scale and have the correct bolt spacing. The switch points have a filler that has simulated rivets so it looks like the prototype. In addition, the points are relieved on the underside, like the prototype, so the point rail will fit into the stock rail. This means you do not need to file the stock rail flange off and as a result the stock rail is stronger.



Using these cast components will allow you to make nice looking, smooth running, intricate track work on your layout. It's possible to build curved, three way, and "Y" turnouts right at the location on your layout. No special tools, jigs, or fixtures are required so you save money.

See our website for more. Sscaletrackworks.com

[Twin Whistle Sign & Kit Co.](#) has a new product: the Art Deco S Gas Station



We will be featuring a "how to construct this model" on our [Facebook site](#) using a step-by step process. The deco gas station is one of our personal favorites, and features the following:

- Laser-engraved Acrylic Parts
- Precut Interior with Accessories
- Detailed S Scale Pumps
- Separate Front Sign
- Selection of Graphics

Outside Cast Resin Accessories Laser-Cut Overhead Letters

The footprint for this model is: 8.25 l x 6.125" w. Add another inch or so for the pumps and front sign.

Our standard is a Mobil station. However, we have several brands that we can do. Call or [email us](#), if you wish, and let us know what brand you would like to model.



[Greenbrier Models](#) is back in the news.

Greenbrier Models was started by Geoffrey Graeber and Bill Wade in the middle 1990's, importing most of the versions of the then popular GP-30 in S-Scale brass from Korea. We soon found that the models sold much better if they were customized and sold as completed models. We identified several custom painters who did absolutely superlative finishing jobs on brass models.

In the last ten years, we have partnered with TrainTek who installs top of the line DCC systems in railroad models. Over the last ten to twelve years, we have expanded we services to other brass engines which were sent to us by our GP-30 customers. We customized these models and facilitated the modelers and collectors with TrainTek so that they had the type of control system they desired.

We had a very active year in 2019, finishing six GP-30's and several other units. We feature mainly diesels, but have done a number of steam engines. The GP-30's done include two for the L&N, two for the Family Lines System, one for the Santa Fe, and one for the early blue and gray CSX paint scheme. In



the works, are one for the Burlington (red and gray scheme), Illinois Central Gulf, and one for the New York Central. During the year, we also finished an Alco for the Interstate Railroad and a Chessie System SD-50 in the circus scheme. In all, we have done over thirty schemes for the GP-30. We have done a number of paint schemes for other locomotives as well.

One of the important projects we have done is the completion of the decals of the New York Central "Lightning Stripes" for the EMD Bulldog Nose of the EMD first generation cab units. They have been done both the freight and the passenger schemes.

Microscale was commissioned to do the run for us. As usual, they did a superlative job on the S-Scale

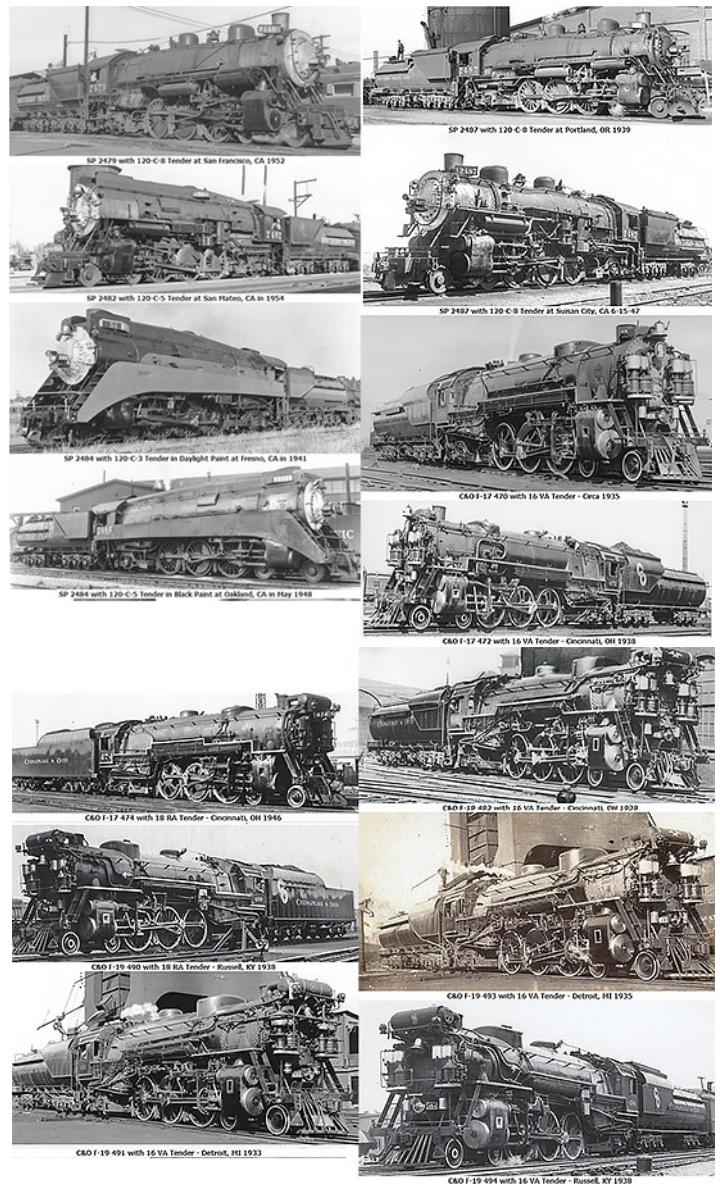


decals. The sheet to do three cab units in HO retails for \$8.25. Our S-Scale version to do three unit lists for \$10.00.

As we progress with the models, we will share our progress with you in this and other publications. We welcome your input. [Email us here.](#)

Dan Navarre from River Raisin Models sent us a quick update.

The sample models are almost completed. I have seen the progress and we should have the samples here in the next month. Photos will be put on the website as soon as they arrive. We will review and document all corrections necessary and perform operational testing on the samples. Those corrections will be integrated into the production models. A delivery schedule will be posted on the website. Call The S Scale Resource February/March 2020



Dan at River Raisin Models at 248-366-9621, or email at riverraisinmodels@gmail.com for additional information as well as their [Webiste](#).

Bill Morris of NE Prototypes says: If anyone is looking for "S"cenery Unlimited / Kinsman style wood reefer kits, I bought the rights to produce those from Don H. about 7 years ago.

I have about 100 of the 36' to 42' reefer kits made up and ready to go. They all contain silk screened Northeastern wood scribed sides made by Gene Walp for these kits. I also still have about another 200 sets of sides only for sale. If there is something you want, please contact me. The wood reefer kits I have updated to be more prototypical by adding different details for the floor type and cutting the Northeastern

Lumber to different lengths for the correct car length according to sources showing these cars in published books.

The original Kinsman drawings by Bill Boucher and my updated assembly directions are included to make a fine looking reefer car unlike anything else now available in S Scale. No they were not actually all 40' cars They came in 36', 38' 40' and 42' lengths depending on the builder and owners specs. No 50' express reefer kits available yet.

NE Prototypes
 PO Box 4-4-2
 Rutland, MA 01543-0442 USA
 TEL: 508-886-4848 8AM Till 8PM Eastern Time
 ONLY PLEASE



Ohio Electric Combine by [Interurban Traction Models](#) has a Carbody of the Ohio Electric wooden combine, with additional under body parts: pilot, doorsteps, 4 dummy poles and 2 Taylor truck frames. The kit contains a total of 9 parts.

The modeler will need to provide the chassis and mechanism, as well as an optional interior and exterior details. [See their Web page here.](#)



Switch components cast in Nickel Silver
 Frogs, Guard Rails, and Points

[Click this ad to see more on our web site](#)

RIGHT ON TRACK MODELS

Railroad structure kits for the discerning modeler. Check out our web-site for a great variety of custom designed model railroad structure kits, detail and scratch building parts in N, HO, S, and O.

We will build most any model to any scale from photos. Contact us for a quote.

www.rightontrackmodels.com
 305.240.8362

Miami, Florida
 M-F 9:30- 4:00 EST

Z-Stuff for Trains www.z-stuff.net
 Just connect 2 wires 585-377-0925

DZ-1040S \$89.00 UQ or LQ

DZ-1065S \$72.00 3-Colors

DZ-1075 Sensor with Alternate 1A outputs or DZ-1075M Momentary Outputs \$42.00

DZ-1050S \$73.00

DZ-1060S \$78.00

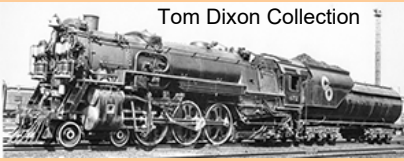
DZ-1080S \$77.00

**“Southern Pacific P-10 and
Chesapeake & Ohio F-17, F-19
4-6-2 Pacific Project”
In S Scale Brass!**

Arn Menke Collection



Tom Dixon Collection



Tom Dixon Collection



These classic locomotives will be built in very limited quantities. The SP P-10's will be built in four versions; regular boiler, skyline boiler, Daylight Paint scheme with full streamlining, and with early and late lettering. The C&O F-17 will be built in three versions and all five of the F-19's will be offered. These classic locomotives powered the famous *The George Washington Sportsman*, and the *Fast Flying Virginian* passenger trains.

**RIVER
RAISIN
MODELS**

**Reserve your model now!
We are finalizing the version
quantities soon!**

www.riverraisinmodels.com

S Scale

Fox Valley Models
PO Box 1970
Des Plaines, IL 60017
www.foxvalleymodels.com
info@foxvalleymodels.com

...Now

WWW.SBS4DCC.COM

IN STOCK - OPEN 24-7
Featuring "Ultra Bass" Speakers



**Howard Brothers
Feed & Grain Complex**

Laser-cut kit. Three buildings. Cool ramps. Loads of details. Lots of class!! Overall complex size is a scale 180' x 100' with a scale height of 82'. See our web site for more photos and more information. Sorry, the boxcar and scenery are not included.

#08107 S \$399.95

B.T.S.
Better Than Scratch!

1782 Trinity Rd
Belington, WV 26250
304-823-3729

www.btsrr.com
\$5.00 S&H in the US

**Membership in
National Association
of S Gaugers, Inc.
Provides You Significant
Member Benefits and
Supports the Growth
of S Model
Railroading**

Why Wait? Join Now!
Visit www.nasg.org for details

TOMALCO TRACK
Quality trackwork for the S "scale" modeler

S standard gauge - flextrack, turnouts, crossings, siding bumpers in code 100, 83, and 70 rail Track Gauges, rail, and track laying accessories Trackwork is DCC ready, weathering is optional Track works with S "scale" wheels only

289 Orchard Circle Hendersonville, NC 28739
Email: tomalco_track@morrisbb.net
For more info & prices visit: tomalcotrack.net (828) 595-0446

Your ad could be here for as little as \$56 dollars an issue. Over 1600 readers could be taken right to your Website. All back issues remain on-line and linked.

Click here to contact us for details

DES PLAINES HOBBIES

**Kits or RTR
Brass
Books
Supplies
Structures
Detail Parts**

3-½ Miles north of O'Hare airport on Lee St.
1524 Lee St., Des Plaines, IL. 60018
Ph. 847-297-2118 Open Week Ends
www.desplainshobbies.com

*Check our on line store. We ship daily.
International sales welcome. Thousands of items listed.
Call our friendly staff*



SCRATCH BUILDING SUPPLIES

Barrels - Screen - Hand Tools
Poles - Blackened Cable & Chain
Plastics - Model Makers Pins
Window Glass - Eye Bolts & Rings
Wood Ties - Straight & Coiled Wire
Black Nylon Filament - Sheet Metal
PC Ties - NIMRA Standards Gauges

DRY TRANSFER LETTERING

Cars & Locomotives - Stripes
Numbers - Chalk Marks
Building & Product Signs
Alphabets - Car Names

Shop Online - cloverhouse.com



Clover House

Box 215D, Veradale, WA 99037-0215

Excele Lubricants distributed by JT's Mega-Steam

Excele Lubricants



- Special Viscosity for S Scale Trains
- Oils are plastic compatible and conductive
- Convenient 4-pack; or purchase individually
- Usage Guide Provided
- Featuring precision needle point applicators
- Developed, tested, and packaged in the U.S.A.

MEGA-STEAM
11 Out of Bounds Road
Palmyra, VA 22963
e-mail: jkmegasteam@aol.com
For Visa / MC orders and info:

(434) 589-2660 • 10AM TO 6 PM EST

www.megasteam.com



**YOUR SOURCE FOR OVER 80
RAILROAD LETTERING,
RAILROAD ROMANS,
ALPHABETS, SILHOUETTES,
DINGBATS, TRAINS, PLANES
AND AUTOMOBILES AND EVEN
SOME SURPRISES.**

ALL FONT SETS ARE AVAILABLE IN
WINDOWS (TT AND ATM) OR MAC
VERSIONS.

RAILFONTS.COM

THE **O** RESOURCE

NEWS, REVIEWS, INFORMATION TO USE

ONLINE MAGAZINE

SCALE

**Don't forget to
read our other
magazine, The O
Scale Resource, for
more modeling
ideas.**

THE MHRV GETS AN UPDATE

By Ken Zieska

The Minnesota Heartland Railroad has been evolving for forty years. When I started building, I “ran” long trains, industrial operations were not an interest. Over the years, the railroad has seen many changes as my focus changed. When I became interested in modeling industrial operations, I saw I did not have the ability to make and break trains for my operations. Last winter, I removed about 20% of the layout, I eliminated the second loop of track, the “cursed” duck under, and began to rebuild.

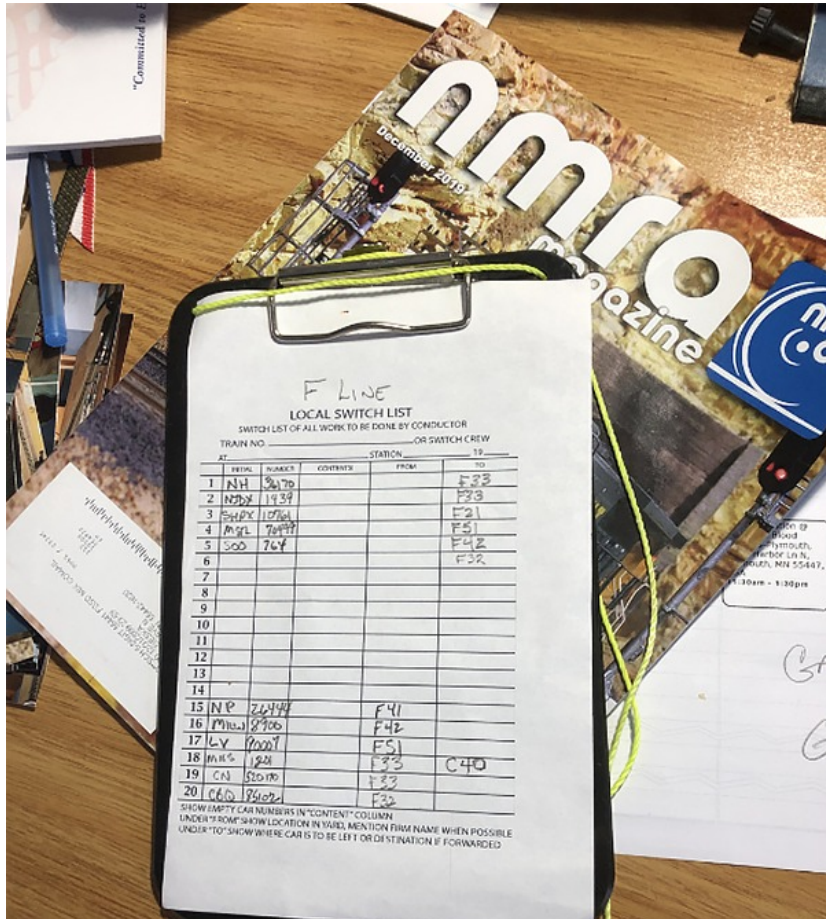
This current revision eliminated hidden storage in favor of a more open scenic outer loop of track and a visible staging yard. Modeling a prototypical yard was not of interest, this yard is designed to make and break trains to support operations. There are no engine facilities, RIP or caboose tracks, each operating situation may see the yard used slightly differently depending on the crew’s needs and work flow. The outer loop still allows me to just “run trains for fun”, and provides a long run for friends to show off their latest model projects or purchases.

The yard is designed for a two person crew. One person is the engineer, responsible for operating the the switcher and the Caboose Industries ground throws to route his power. The second crew person is the traffic agent and yardmaster assigning cars to the appropriate trains and filling customer orders. They work together to plan and execute work in the yard. The yard consists of 12 hand built turnouts using the Fast Tracks tooling, to create nine yard tracks. The shortest yard track is four foot long and the longest nine feet long. I model the early 60’s era, and the majority of my freight car fleet are 40 foot cars. For operations, yard capacity is 50 cars



Ted Larson is making up a train as instructed on the switch list.

on the 6 tracks you see on the right side of the photo. The 3 tracks you see on the left of the photo are inbound, outbound and make up tracks as needed by the yard crew. There are two cross overs on the yard lead providing plenty of flexibility for train handling. The yard has a 19 foot yard lead, allowing crews to pull a full track of cars to sort.



Operations

I do not use car cards, I use a switch lists to tell the crews how to work their train and what the work to do on location. This is a sample switch list. The top section will be the cars to be delivered to the industries and the bottom section are cars to be picked up for return to the yard. The switch list is a simple system, easy to use while I am fine tuning the railroad's operation.

Eliminating the second loop and the "cursed" duck under let me create a Central Minnesota Prairie scene. This Prairie is done in early fall colors and flows into the rocky dells of the Rumansoda River Valley. This location is a great place to "railfan" as trains flow through broad curves. A highlight of this scene is the Pines and Prairies Campground. The tandem trailer you see replicates our travel trailer and the Chevy Nomad wagon is fellow PPSSW member Ted Larson joining us for a restful day of relaxation and rail fanning. The



campground is a quiet location with plenty of wildlife, fresh air and sunshine. Wait... is that a family of skunks approaching? That could change the "fresh air" part of the scene.

You are welcome to visit, the railroad will be open before and after the 2020 NASG Convention. The Canadian Pacific Railroad runs behind the house so you can combine a layout visit with prototype rail fanning.

RIP Track: Improving Brass Trucks

By Jim Kindraka

I've heard and read several times that brass trucks, especially those that came on early imported brass models, do not roll very well. In fact, a friend refers to those brass freight cars as "lead sleds"... I don't disagree! Many roll poorly, especially early brass that was built to look good, not necessarily run well. What I haven't seen as much of, in fact almost none, is fixes for the issue. Too many seem content to complain and do nothing or, maybe worse, keep squirting on dirty-catching lubricants! There is still, after 40 years of brass models being available in S Scale, a lot of complaining! Personally, I won't tolerate models that don't run well. The group of modelers I know always works to repair and upgrade locomotives and freight cars to achieve better operation. What follows, pictorially, are some simple techniques that have been employed and found effective in improving rolling characteristics of brass freight car trucks.

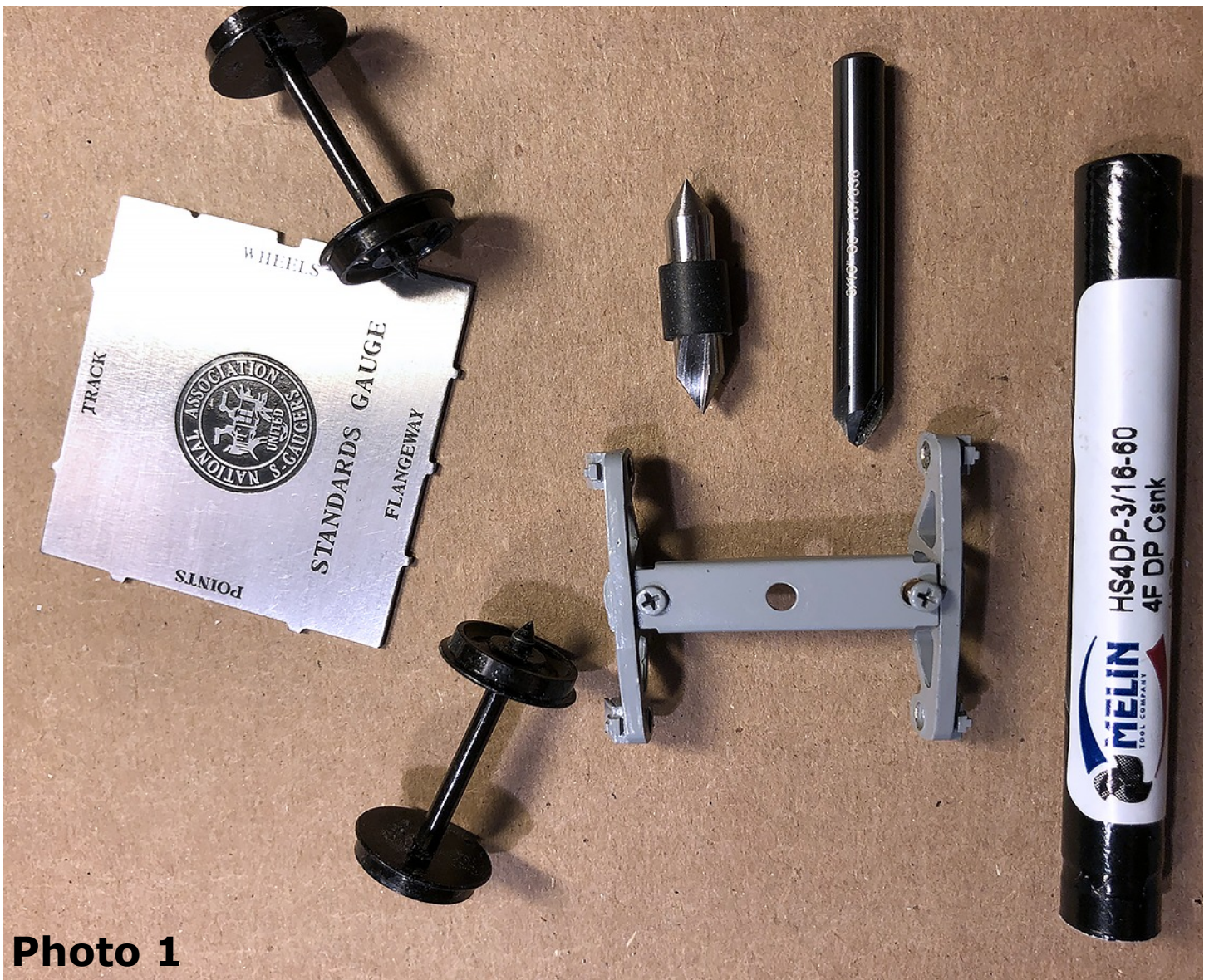


Photo 1

Photo 1: The first step is to remove the trucks and disassemble. This is a freight car truck from an S Scale model imported in 1993, note the needle point axles. Micro-Mark makes an HO Truck Tuning Tool (shorter

pointed tool in the photo) that can be spun by hand to clean and polish the conical hole that receives the pointed axle. The HO tool is really meant for plastic trucks so, in my opinion, a better alternative is the longer black tool, a 3/16ths, 60° Melin End Mill Drill-Point Countersink, available from McMaster-Carr. It does not need to be chucked in a lathe, it can simply be spun by hand in the hole to clean out bits of brass from the casting and

polish surfaces. The important thing is to remember NMRA RP's for pointed axle installations recommend a 60° conical hole. Standard drill bits and reamers are 45° so using one doesn't do a thorough job.

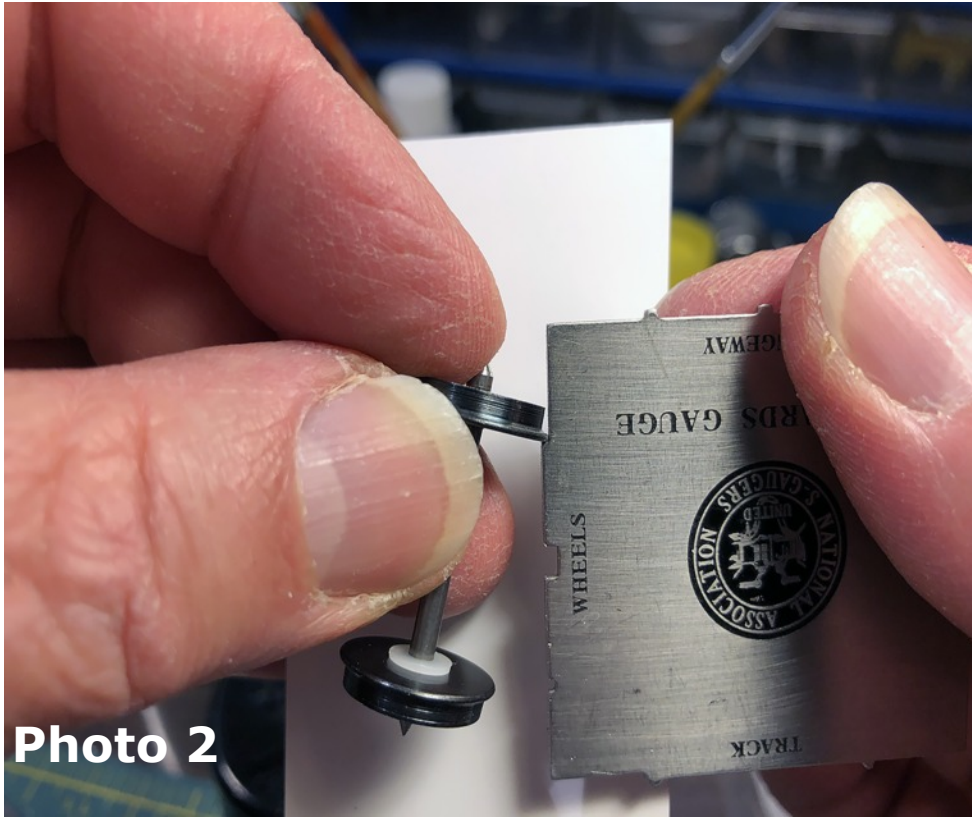


Photo 2: While the truck is apart is the perfect time to check the wheel gauge and address any issues. Countless times I've seen modelers blame derailments on "bad track", sometimes grabbing pliers to reef on the suspected area, only to discover the real culprit is previously unchecked out-of-gauge wheel sets! I always keep an NASG Standards Gauge handy! Place one wheel flange at the end of the long cut out and...

tools notch. If the flange does not go in the notch easily, there is a gauge problem; wide or narrow the wheel set's back-to-back gauge as appropriate. I cannot stress enough the need to use (often!) the track and wheel Standards Gauge tool that NASG sells. I bought several and scattered them around the layout and work bench so one is always handy. They are a mandatory tool, available from the NASG to members and non-members for the same price. Buy several and learn how to use them!

Photo 3: ... move the wheel set to place the other flange in the

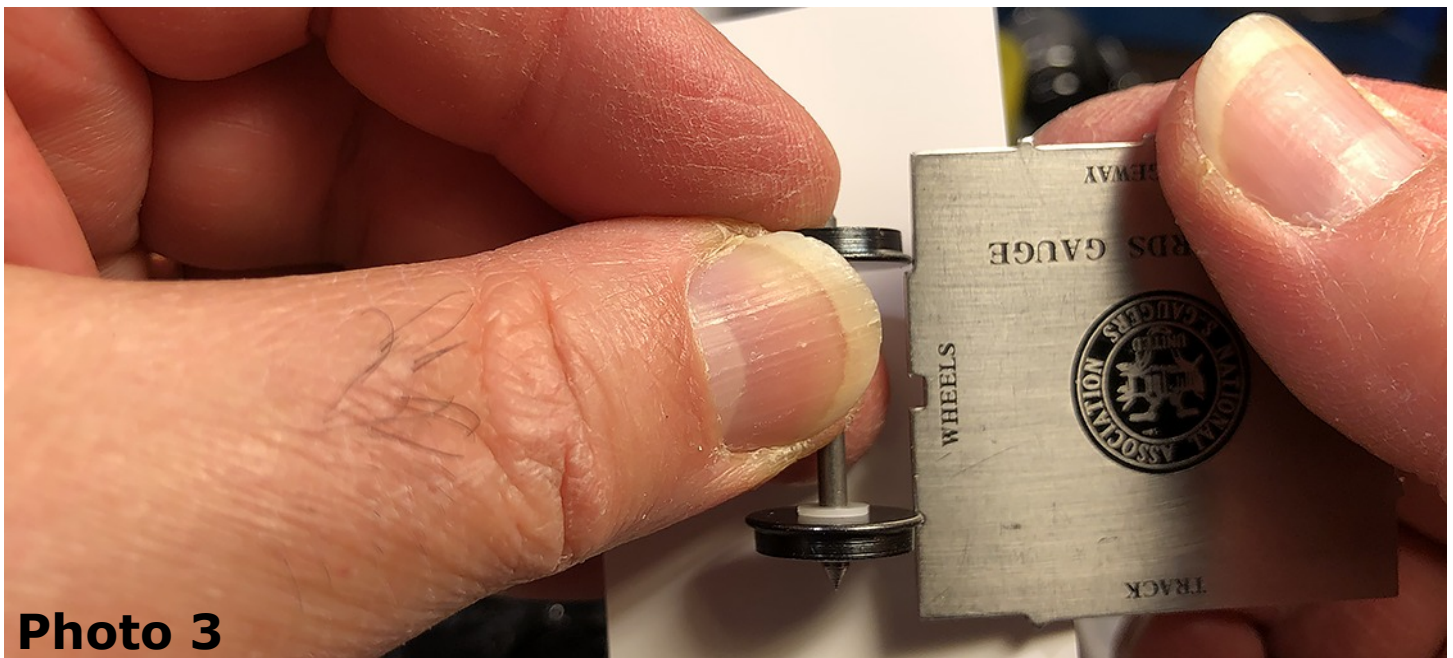


Photo 3: ... move the wheel set to place the other flange in the tools notch. If the flange does not go in the notch easily, there is a gauge problem; wide or narrow the wheel set's back-to-back gauge as appropriate. I cannot stress enough the need to use (often!) the track and wheel Standards Gauge tool that NASG sells. I bought several and scattered them around the layout and work bench so one is always handy. They are a mandatory tool, available from the NASG to members and non-members for the same price. Buy several and learn how to use them!



Photo 4

Photo 4: Older brass wheel sets with blunt axles tend to have more rolling issues. This photo shows a disassembled truck for an early brass model. Once again, check the wheel sets for proper gauge. I also check the diameter of the blunt end of the axle. In this case, the axle's end is 0.075" in diameter. That is very close to a #48 twist drill. (Google "drill sizes chart") so I go 2 or 3 numbers larger in size. In this case I chose a 0.081" #46 drill.

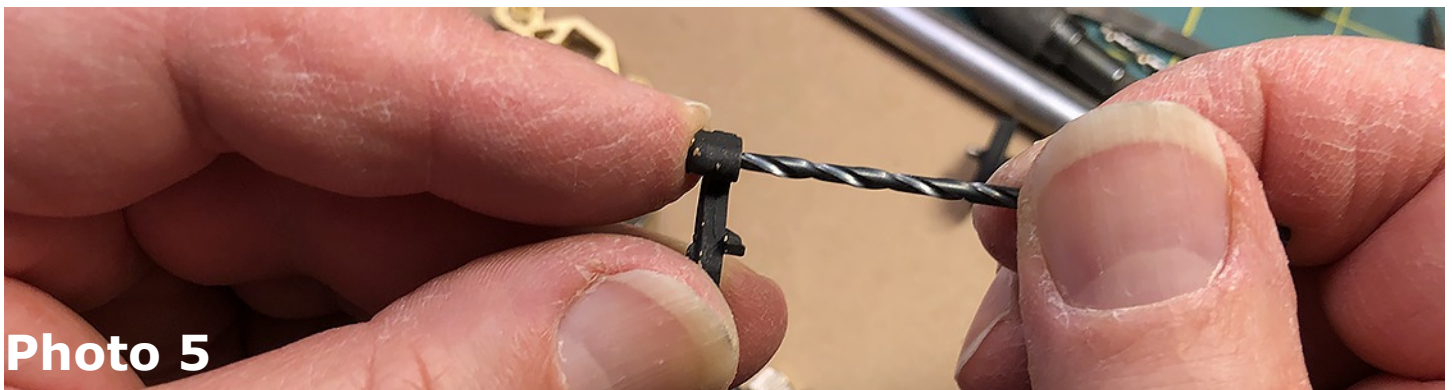


Photo 5

Photo 5: Simply twist the drill bit by hand in the side frame axle hole. If the size you chose is three numbers large, in this case a #45, you may need to put the bit in a hand-held chuck for a little more leverage. Do not use a power tool! You want to clear the hold of left-over brass bits from casting as well as increase its size by a few

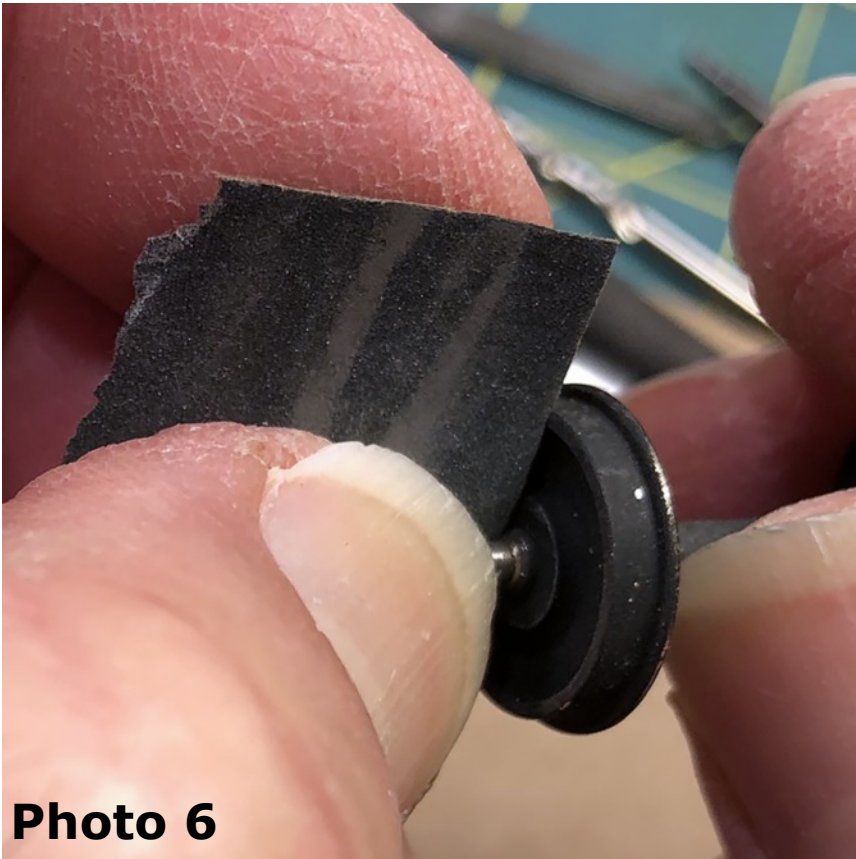


Photo 6

thousandths and polish slightly the inner surface. Using your hands helps develop a feel for what you are accomplishing.

Photo 6: I have also found it helpful to polish blunt axles by spinning the wheel set with my fingers against a piece of 600 - 800+ grit emery or Crocus cloth.

Photo 7: Reassemble the truck. If it contains single side insulated wheel sets, be sure and orient them in the same direction to avoid a direct short. Many S Scale folk aren't aware that since the late 1990's, several pieces of brass rolling stock have been made with dual side insulating wheel sets. A final suggestion, actually a very old modeling practice; thread a piece of heavier duty string, I use carpet thread, through each spring prior to installing. That makes them much easier to find should one pop out during installation. If you are having trouble threading the string through smaller springs, thread the string through a needle

first or dip one end (one end only!) in some ACC glue and let it dry thoroughly before using. Once the spring is installed, always pull the end without the needle or ACC back through the spring to use the string for the next spring!

Enjoy your like-new free rolling freight car and encourage others to do the same – no more complaining!!



Photo 7

A KITBASHED SWITCH TOWER

By Tom Lennon

Long Ago, on a layout far, far away...

I remember an issue of one of the model magazines years back, with an article on building a brick and wood switch tower. I think it was written by Jim Findley or maybe Jack Work, but I'll bet one of you recalls it better. I think they colorized a black and white photo of it for the cover of the issue. Anyway, I tried building it.



Really botched it, and probably tossed it when I moved on to college. But I always liked the look of this tower.

So move ahead about 50 years and I was looking at a very nicely built Plasticville Tower at the 2019 Cincinnati NASG when I recalled the article. As I walked back into the Vendor Room, I spotted a Monster Models Engineers Tool Shed kit for sale on a table, and it all came together in my head. Funny how that works sometimes?

I already had a couple of the ubiquitous Plasticville Towers So I was ready to go.

The tower was simple to work with and required only a small saw to cut free the 2nd story I cut just below the upper clapboard panels and did



a bit of sanding of the mating surfaces to ensure a good tight fit of the 4 sides. A bit of Tenax along the seams joined the 4 sides. Then a bit of filler on the seams and a light sanding of the bottom edge and it's ready for painting. I used Tamiya rattle cans to paint the 2nd floor, and added clear styrene to the windows.

Then I turned my attention to the Engineer's Shed kit. I needed to totally modify the roof. The kit is designed to build a front to rear sloping roof, and one of the sidewalls is several courses of brick lower than the other. I wanted a step in the upper line of the brick, so the wood part of the tower would "sit on the rafters" not on top of the parapet.



This took a few steps:

- First I shortened the non-door end to match the height of the short side.
- Then I measured the length of the wood tower, and measured that length along the top of the side with the large window. I matched the height of the short side again, and double-checked that I was cutting the correct bit off of the parapet, and had at it.
- I had a couple of matching pieces of horizontal brickwork to make the missing parapet for the short side.
- I used the cardboard stock to make a peaked roof and installed it with a slight slope towards the end with the door.
- And then I carved small bits of basswood to fill in the slots where the rafter ends were supposed to mount.

I sprayed the entire brick story with Rustoleum Red Sandable Primer, and then randomly applied Pan Pastels in brick-like colors to add a variation to the brick color. I intend to add a bit of tuckpointing in light grey before I install it on the layout.

I had to saw the stairway molding to match the height of the structure, and because it had a broken railing I rebuilt it. I sprayed that brown, and applied gray Pan Pastels to the treads to show it's been too long since it was last painted. I added a support post to the deck using Evergreen styrene. I then added a couple box shapes to the 2nd floor interior and a couple of figures to finish it off.

This took me about 5 one hour sessions, start to finish. I encourage you to use your imagination and discover the hidden potential of the Plasticville moldings.

Quite by accident, I found a second roof molding, free at a local flea market and combined it with the leftover walls of the 1st floor of the tower. It will become the Lumber Yard Office for my kitbash of an O Scale plastic lumber yard kit I bought years ago.



If you can attend the 2020 NASG in July here in Minneapolis, you might see these two buildings lurking along the Minnesota Heartland during the layout tours, or maybe in the Vendor Room.

So, as you see, you don't always have to follow the directions. Not every model on your layout has to be prototypically perfect and detailed to the Nth degree. It's nice to spend lengthy hours duplicating that special car or structure for the layout; the star of the show, so to speak. Just remember that there needs to be a good supporting cast around that star, and you shouldn't be afraid to build something easy and simple to fill those roles. And always remember to have fun!

Oh yeah, the Star Wars reference? My wife and I just went to see the final episode two nights ago, and on the way out of the theater I commented that it took Lucas our entire life together for

him to tell the 9 part story. I think he finished it none too soon, and maybe I need to kick the layout building project into high gear!

Your Buddy,
Tommy.



"Don't settle for the copycats..."

JT's MEGA-STEAM Smoke Fluid



"When only the best will do!"

- Safe in ALL scales and ALL manufacturer's smoke units
- Proudly made in the U.S.A. by passionate model railroaders
- Offering a choice of 50 premium scents
- Celebrating over 13 years of quality service to the hobby
- Superior smoke output with quick dissipation

• \$6.00 per 2oz. dropper bottle

• \$18.00 per 18 oz. bottle

Shipping charges are posted on our website
or call for current rates

MEGA-STEAM

11 Out of Bounds Road

Palmyra, VA 22963

e-mail: jkmegasteam@aol.com

For Visa / MC orders and info:

www.megasteam.com (434) 589-2660 • 10AM TO 6 PM EST

**IF YOU ARE SEEING
THIS...
...YOUR CUSTOMERS
COULD BE TOO!**

**Your Ad Could
Be Here!**

**Email Jeb Kriigel By
Clicking Here!**

**All back issues
are on-line
and free to read**

THE S RESOURCE
NEWS, REVIEWS, INFORMATION TO USE
SCALE
ONLINE MAGAZINE

**Click here to
access all
our back issues**



DENVER & CAT CANYON WESTERN

By **James Spice**

Welcome to the “Denver & Cat Canyon Western” railroad. My Name is Jim Spice and I am president and chief bottle washer here... But today, I will be your “Tour Guide” through my Sn3 layout.

My layout is a freelanced model railroad that I envision in the mountains of Colorado & New Mexico. My plan is to emulate the operations of railroads such as the D&RGW, C&S, RGS and others, but not follow “religiously” everything they did or the locales they ran through. I decided on freelance because having built a few “dedicated to prototype” layouts in the past, I just wanted something with the “Flavor” of the mountain Narrow Gauge, but not something where I was locked into re-creating exact scenes and areas.

My last layout (at my home in Illinois) was a very large (32' x 32') HO/HOn3 that I called the “Denver & Cat Canyon”. (Anyone attending the 75th NMRA National Convention in Milwaukee may have had the chance to visit and/or operate on it as it was a feature layout.) Moving to Arizona, I thought it only fitting to call this one the “Denver & Cat Canyon Western”.

I chose Sn3 because (I feel) it is a perfect combination of size to fit into a relatively small area, but still provide a large enough scale for excellent detailing. I love to super detail scenes and equipment.

This past February I was having some health issues that were going to force me to leave my “other” hobby of R/C aircraft. Because of this, I told my wife that I was going to go back to my “Roots” and build another railroad... She was all for it... In her words... “Trains don't fall out of the sky and crash”.



When thinking of narrow-gauge operations, my mind immediately goes to logging and mining... So, this was to be the theme of my railroad. I picture the “Cat Canyon” as a short line railroad that has either leased or bought equipment from the “Big guys” and has trackage rights to their rails. Because of this, I can justify running “name trains” during sessions (IE D&RGW, RGS, etc.) as through trains and having motive power/rolling stock lettered as such.



Eastbound engineer's view heading into Deadwood.

My operating system is one I developed on my last layout and consists of waybills, car cards, and train orders. This fits nicely into my 40's-50's era timeline, and it also allows me the freedom to not be locked into a "computer generated" system.

The layout is hand laid code 70/55 rail with some flex track in hidden staging area. Control is through a wireless NCE DCC system with 18 power districts. All locomotives are sound equipped, as are a few of the structures (listen for sheep baying, boards being cut, water rushing etc.).

I've used a combination of "L" girder and flat surface framing along with 5/8" birch plywood sub roadbed. I like to build my turnouts in place as I feel it offers the opportunity to get a smoother flowing track.

Scenery is a hodgepodge of various techniques including hydrocal hard shell, expanding foam, carved foam, and most recently the polyurethane system from "Bragdon Enterprises".

I am hoping to have all of the track laid by June of this year, and be in "Full operation" shortly after. Currently, I am about 2/3rds completed, with most of that work having finished scenery on it.

One of my favorite parts of this hobby is the sharing and camaraderie of my fellow enthusiasts. To that end, I can't wait to get things all up and running and have a few Ops sessions.

In closing, I just want to offer an open invite to anyone in (or visiting) the Phoenix area to come over and join me. If nothing else, we can have a bull session or even get into an Ops session running some trains.

Thanks for looking at my Railroad, [and check out my new Website for more information.](#)

[Jim Spice](#)



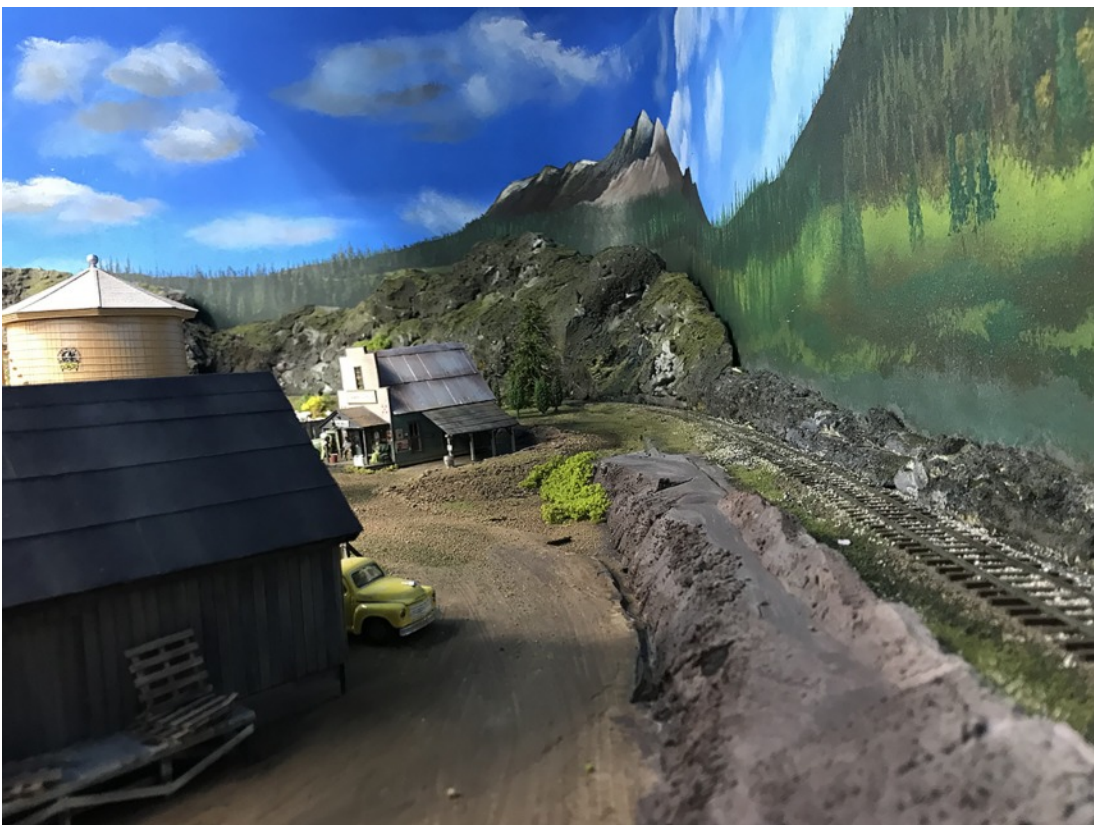
Looking South from the turntable in Deadwood yard.



Shay No. 1 working the lumber mill.



Above: A gondola being loaded with “unobtanium” ore at Sheazal mine.



Left: Northbound road out of Deadwood heading towards “Delaney Corners”.





Delaney Corners

GAS-FOOD-TRUCKS

7up

ROOM FOR RENT

OPEN

Coca-Cola



*Above: Double deck stockcars being loaded at pens.
Below: Loading pens and Deadwood tank.*





*Above: Local freight No. 32 taking on water at Mesa Tank on the D&CCW.
Below: Twilight at the stock pens.*

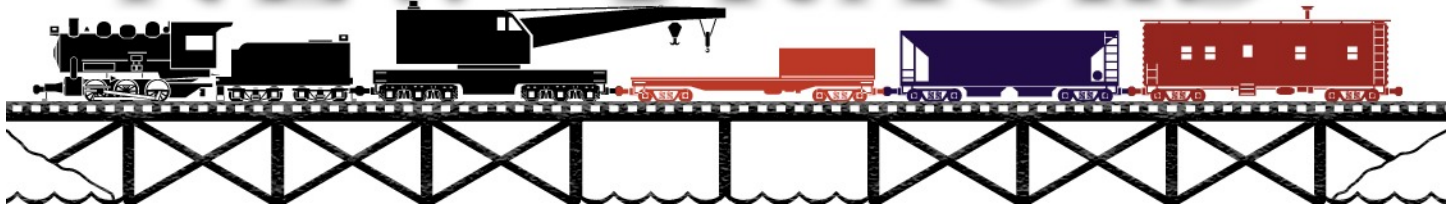




*Above: Tunnel No. 1 and tributary at Dusty Creek.
Below: The view Eastward overlooking Dusty Creek.*



NEW TRACKS



Mentor Definition: A Trusted Counselor or Guide

By Contributing Editor Jim Kellow MMR

The 2020 Must Attend Event for S Scale Model Builders "Mentoring Experience Par Excellence"

The **Minnesota Pines and Prairies S Scale Workshop Club** is sponsoring the 2020 NASG Convention and invites you to join them for what they call a **"Gathering of Friends"** at their Convention July 7-12, 2020 in Bloomington, Minnesota. Ken Zieska, the Convention spokesperson said: "In addition to all of the normal convention activities, the educational opportunities from hands on model building and operation combined with expanded clinics, model contest and display programs, will provide a **"Mentoring Experience Par Excellence"** for everyone who models and operates 1/64 scale trains."

I have been writing my "New Tracks" series in S Scale Resource magazine for two years on the importance of mentoring in helping modelers become successful, confident, skillful, model Builders. This is the first national convention I have heard of that has hands on model building and mentoring as its main focus. I applaud the NASG and this club's efforts in providing these educational clinics, workshops and mentoring opportunities. If you are reading this article, and you are, or want to be, a S Scale model builder, or you are a manufacturer or supplier for S Scale model builders, this is, **THE ONE 2020 EVENT**, you should attend.

When I originally looked at the 2020 NASG Convention website I thought the convention was going to be just another standard annual convention run by a local club. But after talking to Ken Zieska, the convention spokesperson, for a few minutes, I realized that this convention was truly going to be different and something that I needed to write about, and encourage all S Scale model builders to attend. After all, a convention focused on model building clinics and hands on educational workshops, combined with a model contest and new expanded model display program showing off the creativity and modeling abilities of S Scale modelers, can only be described as Ken said a "Mentoring Experience Par Excellence". Ken was a great help to me with this article, and I encourage you to contact him with your questions or suggestions, he is only too glad to help.

Ken.Zieska@sscaleresource.com

What changed my mind about this NASG convention being a must attend event for S Scale Model Builders?

First, I was impressed when Ken told me his sponsoring club had both American Flyer and S Scale modelers and that most Club members are also model builders. He said that "This is something other S Scale or American Flyer Clubs don't always have". He also said that the club was inviting the 1/64 Scale farm modeling community to exhibit their models and diorama techniques on the hands on modules which are being built during the convention. Ken said he made the trip to the 2020 National Toy Farm Convention in Dyerville, Iowa to make the invitation.

Again, I applaud this decision. I wrote an article in the [Aug/Sep 2019 issue of *The S Scale Resource*](#) about the merits of farm modelers and S Scale model railroaders joining forces for the benefit to both groups. I will not be surprised that farm model manufacturers have a presence, for the first time, at this convention. Ken also told me there will be a special display area for the farm modelers' displays in the contest room. This will also be a first, and hopefully not the last such model building displays, at an NASG convention.

Then I talked to the convention chairman, Steve Doyle, to get his views. You have likely seen Steve's layout featured on the cover of the January/February 2019 *S Gaugian* magazine as well as in *Kalmbach's Great Model Railroads 2016* issue.

Steve, I am interested in why the club decided to host another NASG convention and make its main focus on model building and mentoring. "Well, to be honest, at first we didn't think about hosting the convention. Our club is informal, we have no treasury and none of the typical club structure. From a business point of view, there is no reason to host. We are not in this for the money. Frankly, we were not asked until earlier this year (2019) to sponsor the convention, and therefore, did not have the normal planning and development time for the convention. But I think the convention we are going to put on will be very well received and provide tremendous educational opportunities for S Scale modelers."

"Our club's senior mentor, Dave Jasper, pointed out to us that the only reason we would have to host another convention was to invite friends to join us in celebrating the hobby and sharing our model workshop educational philosophy. This became the ember that lit the fire. It is why we are calling the convention; NASG 2020, "The Gathering of Friends" and why we are focused on making the convention a full model building learning experience and "**Mentoring Experience Par Excellence**" for everyone who attends."

"Our members who have scale interests, up to fine scale modeling, are looking forward to sharing their work and modeling expertise. Their mentoring abilities are why we are putting together such a full clinic and workshop schedule throughout the convention. We are particularly excited about sharing our "Hands on" workshop programs."



Gary Brown's American Flyer kitbash.

Gary imagines how American Flyer equipment may have evolved to reflect newer cars and paint schemes in his clinic and display.

"Our membership with interests closer to our American Flyer heritage are also interested in sharing their model building skills and techniques, and are excited to show off their collections and operations. They also look forward to meet and swap with others who share their American Flyer interest from across the country. We will have one of the nicest, well lit vendor swap and sell areas, in recent convention memory."



Tom Lennon's build of the Pre-Size flat car kit.

Tom Lennon will share his kit bashing and kit building techniques and tips that build your fleet. Wait, don't pass by the old Marx boxcar until you see what Tom can make out of it.

Steve continued: "A highlight of every convention is the NASG model contest. This year's contest will be expanded to include a non-contest display area and be on the main floor just a few feet from the exhibit hall. Some modelers have told us they build models to try new techniques or to be realistic models not necessarily prototypically accurate and want the option to show their models but not have to enter the contest. The modeler's contest and display area is where individuals can either enter their models in a contest category or display their projects. Either way, the modeler can sit with their model, share how they built the model, what parts they added or used, and discuss modeling technique with other interested modelers."

I think this is a great idea. The NMRA offers this kind of non judging display area for modelers and it has been very successful. I believe this display area and the ability to talk with the model builders can be a great mentoring opportunity, and greatly enhances the modeling educational value of the convention.

Thank you Steve and good luck with your convention. He replied: "We look forward to hosting this convention and providing an exceptional experience for everyone who attends. We hope your readers join us to see some old friends, make some new friends and leave with significant new model building skills, techniques, and a renewed desire to start a new project to enter in a contest or display and share at a future convention." You can get more information about the club at their Facebook page: Minnesota S Scale

I believe the convention focus on model building and mentoring is exactly what is needed so future modelers in the hobby will be able to continue the model building that has made our hobby what it is today. We definitely need to pass on to future modelers the skills and modeling abilities of today's talented modelers. Demonstrations, hands on workshops, clinics, expanded model contests and displays, and mentoring, I believe, is the way to accomplish this knowledge transfer.

Therefore, I concluded that what the club was planning for the NASG convention is exactly what I believe is needed in the hobby and what my articles have been about for the last two years. I was all in to try and help communicate the opportunities I see for model builders by attending this convention. The publisher of this magazines concurred with my views, and agreed to run this article. So please take a look at what is being offered at this convention and consider attending. By the way, if you do go please thank the publisher of *The S*



Scale Resource magazine, who will be there, for running this article, and their dedication to promoting S Scale model railroading.

If you are a model builder who wants to improve your skills and techniques, or a modeler who wants to start building models, this convention is for you, and I encourage you to attend. ***If you do not attend, when you hear about the convention from modelers who did, you will probably wish you had. Don't miss this opportunity. The same goes for model manufacturers who want to supply model builders.***

The Mentoring Programs at the Convention

Building modules during the convention is not normally done, Ken explained it like this. "The hobby media is full of conversation about building "small scene"

This is Jim Kindraka's display of models he builds. Take the opportunity to sit down and share modeling ideas with some of the finest modelers in S. Find where they go for references, their sources for detail parts, techniques and tips.

railroads. T-track, FreeMo and the NASG Modules standards are all designed to help with this and many railroad modelers are just building one scene at a time to fit the smaller spaces many people find themselves having as they downsize or are starting out. S Scale fits perfectly into this idea. 1/64th, or S Scale, is a great size to model in, to be able to create details that can be appreciated by the casual observer, and there are so many great supporting pieces to help create a fantastic urban or rural scene. When you add to that, S Scale is such a perfect size for modeling railroad operations, we feel we have a great deal to offer. During the convention, we are going to demonstrate that by constructing 24 feet of sectional railroad in a series of ongoing clinics and hands-on workshops beginning on Tuesday evening and running throughout the convention. For example, we will present a clinic on how to translate prototype branch-line and industrial railroad operations to fit small scene railroads. Then, we will build using different code sizes of rail and turnouts demonstrating how different rail sizes look installed on a layout. When the layout is wired, we will be able to demonstrate "dead rail", DC, DCC, LocoFi™, and the proprietary systems MTH and Lionel offer. Everyone attending the convention will have the opportunity to try out the different systems during open "operating" times. Having this great space to work with, there will be ongoing scenery workshops where you can not only learn new techniques, you can try them yourselves under the watchful eye of experienced mentors. To complete the experience, different operations systems such as car cards and switch-lists will be used to "run the railroad".

Ken provided this description about the Model Railroad that will be constructed during the convention. Sounds really special.

The Pines and Prairies Short Line The P&PSL

The P&PSL is a Granger branch line connecting the Minnesota town of Long Prairie, a small farming community, with the town of Pine City. Long Prairie is a typical small town in the fertile

breadbasket of the upper midwest, its business district anchored by the local grain elevator that dominates the prairie skyline. Pine City is a larger community, the county seat and regional economic center. The P&PSL connects with a regional Class 1 railroad in Pine City.

The P&PSL will be constructed and operated during the NASG 2020 Convention, “A Gathering of Friends” in Bloomington, Minnesota. The construction and operations of the layout will be a hands-on activity for all convention goers. It will be an opportunity to demonstrate many of the methods and options available to create a railroad model in S. The railroad will also be a community meeting space where old friends and new acquaintances can share modeling experiences and skills while interacting in an informal setting. The layout will be a canvas for mini-workshop clinics conducted throughout the convention. New and traditional techniques, tools and equipment will be demonstrated that many conventioners might not have had the opportunity to encounter. The railroad will provide the opportunity to test run equipment purchased during the convention. Finally, the railroad will “work”; it will have meaningful operations and will demonstrate the fun that can be a small scene on a layout or modular railroad.

The project begins Tuesday with the preparation of the roadbed and laying track. By Wednesday we expect to have wheels rolling on the layout. Throughout the convention, we will be demonstrating control systems, scenery and operations. When we are not demonstrating, the layout will be open to test your latest purchase, run your favorite locomotive or freight car or just run trains.

I asked Ken: Your mentoring programs are really a great amount of work to be accomplished during the convention. Does your club have people who can mentor all of these skills? Ken replied, "Not in our club. While mentoring is part of our group's credo, we are bringing in “reinforcements” skilled local modelers and manufacturers are coming to assist and we have been connecting with the S Scale community talent base across the country to also join us. Many of your readers have seen PPSSW members doing hands on clinics at past NASG shows, S Fests or the O&S Midwest shows. This experience has taught us that participants leave with confidence in the new skills they have learned and connections with other S Scalers to help them continue to grow in the hobby."

He continued: "One of the great tools helping the S Scale community grow is the internet. As important as the internet is to the future of our hobby, it just cannot compare to the value of personal connection and hands on experience. Enhancing that personal experience with the support of others who share your hobby and who have developed tools and techniques which they share with you is what the mentor culture is all about."



Photos of a make and take clinic where the kit is started. Modelers of all ages and experience are welcome. Ken Zieska will host another make and take clinic, followed by an active workshop space in the display room. If it your first kit, or if you are an experienced builder, this is a great opportunity to learn and share. As an added bonus, you will take home a new structure for your layout. We will have a selection of structures you can purchase or bring one that has been sitting on your project shelf.

I could not have said it better. Also, once you have met the modeler in person, it is much easier to continue your mentoring by email later if you both want.



Lee and Mary do "hands on" scenery with the Pines and Prairies.

While you can read about doing scenery, you can watch a you tube video or sit in a clinic to learn, but nothing is as beneficial (or fun) as doing it yourself.

I asked: Will you go into a bit more depth on the operations and scenic clinics/workshops for us? "Sure, the layout we are building is going to be a blank canvas. We will add roadbed and track, and then we will demonstrate proven best practices to creating scenery. We will have product supplies, give demonstrations and then have convention goers do it themselves. At the last show, the youngest person to try their hand at scenery was 12 years old, the oldest 80. Scenery is an area where we can learn a great deal from the farm modelers, their dioramas are some of the most impressive I have seen. They have been invited to attend and participate in our clinics/workshops.

Operations is another fast growing part of the hobby. We will start with operation basics, and go from there. Attendees will be able to experience operation using a variety of power and control systems during our operation workshop. We have a couple of professional railroaders who will be there to lend a prototypical feel to our workshop. If you really enjoy operations, there will be opportunities to operate on local model railroads during the convention." Sounds great to me.

In regards to the specific clinics to be offered, Ken told me: "There will be a full clinic schedule beginning Tuesday. Some topics can take advantage of more demonstration and offer the opportunity for hands on interaction with a skilled mentor, we like to call these our workshops. Actual model building techniques, and

model railroad operation options, coached by experts, so you can really see how a talented modeler builds a model, the decisions made during the construction, and tools, techniques, glues, and detail parts needed to finish his model. All clinics and demonstrations will be conducted by extremely talented modelers who are committed to not only showing you their modeling but making sure when you leave you have the "confidence" to try, and "skill and technique knowledge" to be successful in building your own models.

All you need to bring to get the benefits of this "first of its kind at a convention" mentoring experience is a desire to learn to build models. What more can you ask?

For your convention planning, Ken has provided a list of the clinics scheduled as of the date of this writing, mid November 2019.

Lists of Clinics (As of Nov 16, 2019) Others are being planned.

- Amazing modeling of 1/64 Toy Farmer modelers. various *
- Adapters for MTH to AF track work Jamie Hanson C
- Building Turnouts using the Fast Tracks system Jeff Saine W
- Building Turnouts using the S Scale Trackworks components Glen Guerra W
- Building wood and laser cut structures Ken Zieska W
- Building a small railroad that works, small scene railroad model Michael Fox CW
- Control system options for S CW
- Creating realistic models when rivets do not count Tom Lennon C
- Dead Rail installations and operations Bob Rogge, David Kieth CW
- Ideas for kit bashing from Flyer components Gary Brown and Jim Brown C
- Introduction to the NASG Will Holt C
- Introduction to the WIFI Model Railroad Control system Peeyush Garg W
- Keep them running, AF maintenance tricks Terry Didion and Glen Thoey CW
- Making photo backdrops TCD NMRA modeler C
- Making trees with a system C
- Modeling an iconic short line railroad in S Steve Monson C
- Modeling the a small SP fruit terminal operation Doug Hodgson C
- Prototype modeling, researching, planning and detailing. Jeff English and the Rivet Police C!
- Railroad operations, moving cars like the prototype Panel * CW
- Second Generation Era Modeling in S Robert Fracella C
- Selling on E-Bay Tom Lennon C
- Tired Iron, vehicles to help make the scene Ted Larson C
- Water slide decaling TCD NMRA modeler * CW
- Weathering freight cars Mike Ostertag and TCD NMRA modeler CW
- Weathering your track work Charles Malinowski * W

C - Formal clinic

W - Workshop or will also include workshop time

*** - Will also include display table**

From a model building standpoint, there is no question in my mind that if you are an S Scale model builder, this is a convention you must not miss. I also believe if you are a manufacturer of S Scale kits, parts, or a supplier of raw materials this is the one S Scale event you should attend and exhibit/demonstrate your products. Further, I believe shows around the country and future conventions will want to learn about how this club has structured its convention so they can bring mentoring to their events. That would be great.

I wish everyone who attends good luck going down some "New Tracks", and a special thank you to the club members who came up with the mentoring focus for the convention and for making the convention a "must attend" event for model railroad builders, manufacturers and suppliers from around the world.

Lastly, I would like to hear comments from any of you who attend this convention. Efforts like this for model builders, need to be supported and encouraged. I am retired and daily, have the luxury to work on building models, and writing my "New Tracks" series of articles for two publications. It has been a long time since I have wanted to attend any convention. But this one really sparks my interest, and I hope you feel the same way. If you have any questions please contact Ken at Ken.Zieska@sscaleresource.com.

Thanks for reading this far. Time for me to get back to my workbench and see if the glue has dried on my current project. Again, best of luck in your model building. By the way, I recently set up a Facebook page, [Jim Kellow MMR](#), please look it up and like it.



Brooks Stover and Dave Jasper and Lee and Lee Grube operations photos.

Are you puzzled by "operations"? You will have the opportunity to learn in a clinic, workshop and hands on sessions. There will also be special operations tours to local model railroads.

Another Type of Soil Drilling Truck

By Joe McGee

I really enjoyed the article in the last issue of *The S Scale Resource* by Michael Byle as I retired in 2017 from a geotechnical engineering firm where we commonly used auger drilling rigs similar to Michael's during environmental investigations to install groundwater monitoring wells. I wanted to compliment Michael on a great model.

As my first foray into scratchbuilding with styrene and my return to the hobby after a 30+ year hiatus, I decided to build an S scale truck-mounted soil boring rig in 2017. The prototype was larger and different from Michael Byle's, but the starting point was also a flatbed stake truck, a Greenlight 2017 International removable stake flatbed truck. It was larger than Michael's and contained some features that Michael's didn't have.

The main difference was the mast with two spooled cables. Please see the attached photos. A couple other different features were the hydraulic pipes painted an oily steel color to simulate hydraulic oil on polished steel, hydraulic mast lifts, front and rear hydraulic jack stabilizers for the truck when in operation, and a driller's platform for the driller to stand on and operate the drilling rig control panel. I liked Michael's bright metallic exhaust stack better than mine. I also used threaded screws as my drilling auger flights (the length of pipe with the Archimedes screw profile) and also included a rack of auger flights on the flatbed. White PVC tubing in clear toothpick wrapping simulated PVC pipe wrapped in plastic used to construct a well. My diesel motor was a Shapeways 3D printed version.

The final version gives the sense of a drilling rig I was familiar with, but I had to take liberties with the positioning of components on the flatbed where there was room. Getting the orange-yellow paint color to match the rig I had in mind also introduced me to the world of model paints, and all the frustrations of getting model colors to match a certain prototype. The last couple photos show my rig drilling a boring to install a well at a gas station, where the underground storage tanks had leaked into the groundwater.





What's on your workbench today?

This series shows our readers what other modelers are working on, and we need your help to make it successful. All that's needed is a simple snapshot of what your workbench looks like and the project on it. Send us a picture or two along with a short description of what you are working on so we can share it here. If it's a project under construction, send it in. Repair job, send it in. Completed project, send it in. Send your pictures and descriptions to daniel@modelrailroadresource.com

S. SHAYLE'S OFFICE

By Jas Millham

The coal merchant at Rookfield now has an office. This started as a 4mm scale Airfix/Dapol platelayer's hut found in a junk box at an exhibition. The door and window were missing.

I epoxied a 3mm scale sleeper strip to it to raise the height of the walls to the equivalent height in S as they had been in 4mm scale. Planked card or batten board would no doubt also serve. I also widened the doorway and filed down the bottom edge of the window to the same scale height from the ground as previously producing a portrait format window in place of the original landscape one.

The brick chimney at the rear was also removed and replaced by a stovepipe made of 16SWG wire. This would no doubt be connected to a Tortoise coke stove.





THE **S** **RESOURCE**
SCALE

NEWS, REVIEWS, INFORMATION TO USE

HERE IS HOW TO CONTACT US:

Phone: 815-584-1577

FAX: 800-783-0127

**Email: amy@oscaleresource.com
daniel@oscaleresource.com**

**Mail: The Model Railroad Resource LLC
407 East Chippewa St.
Dwight, IL 60420**

**www.oscaleresource.com www.sscaleresource.com
www.sscalemidwest.com**

S SCALE SHOWS & MEETS

The S Scale Resource Magazine will now be providing a free listing of upcoming events. This small, text only listing will include the Event, Date, Location, Type of Event, and Contact Information. [Click here](#) to go to the sign up form. This form will take your information, and we will publish it in our next issue. If it is an annual event, you will need to submit your information every year.

Pacific Model Loggers' Congress

April 4th, 2020

Camp 18 Restaurant and Logging Museum, 42362
Highway 26, Elsie, Oregon 97138

This one-day convention is aimed at those interested in logging railroad and wood product industry modeling. Model contest with awards given out the day of, logging-specific vendors, technical and history clinics, terrific museum displays of logging hardware and photos. All scales and gauges welcome

Email: splco-mwry@comcast.net

Web Address:

<http://www.pacificmodelloggerscongress.com>

2020 NASG Convention

July 7th through July 12th, 2020

Bloomington, Minnesota

We are planning a full slate of activities, tours, clinics, workshops and exhibits. The hotel is also near the Mall of America, Prince's Paisley Park and other great "tourist" destinations. We have selected the Doubletree Hotel by Hilton as our headquarters because they have shuttle services to the airport and the Mall, they have great guest accommodations and the Convention space is huge and in one central location. Reservation information will be on the

NASG site soon.

Email: Ken Zieska

Website: www.nasg.org/Convention/2020/index.htm

2020 Spring S Spree

April 30 - May 2, 2020

The 2020 Spring S Spree is an all S Gauge Model Train event. This hobby specializes in 3/16" model trains. The 2020 Spring S Spree will be held at the Veterans Memorial Coliseum located on the Marion County (Ohio) Fairgrounds. The address is 220 East Fairground Street • Marion, Ohio 43302

Website: <https://ssprez.info/>

O & S Scale Midwest Show

September 18-20, 2020

Indianapolis, Indiana

It's September! Time to kick off your modeling season. Come enjoy the O & S Scale Midwest Show.

This is a dedicated 2 rail O Scale and S Scale show; however, we encourage and welcome the many modelers and collectors from the 3 rail and high rail side of the hobby to attend. There are many aspects of the hobby, including building, scenery and more that applies to any scale. Moreover, this show is a great place to get inspired while meeting old friends and making new ones!

Website: oscalemidwest.com/

Email: info@oscalemidwest.com

O Scale, S Scale, Narrow Gauge West

May 21-23, 2020

Hyatt Regency, Santa Clara
5101 Great America Parkway
Santa Clara, California

O Scale – S Scale – Narrow Gauge West is the largest 2-rail O scale convention west of the Mississippi, the largest S scale convention west of the Mississippi.

Email: info@oscalewest.com

Website: oscalenational.com



MANUFACTURERS

DEALERS

PRE OWNED

EAST WEST RAIL SERVICE
Car Kits
Structure Kits
Detail Kits
4778 Habits Glen Ct. Cincinnati, Ohio 45244
www.eastwestrailservice.com al@eastwestrailservice.com
S Scale Model Railroading Kits

DES PLAINES HOBBIES
1524 Lee Street
Des Plaines, IL 60018
Phone: 847-297-2118
Email: dphobbies@earthlink.net
Web: www.desplaineshobbies.com

PRE-SIZE MODEL SPECIALTIES **Free Shipping**
See our web site for details
Cast resin items for your S & Sn layout.
Tunnel portals, bridge piers, abutments, culverts, and retaining walls.
Trackside details and sage brush tree armatures.

To advertise in The S Scale Resource classified listings [contact us for our rates](#). Your classified ad will appear in the section you want for 6 issues. If you do not see a section that you think would fit your products or services, let us know. We can add a category that better suits you. Your ad is hot linked to your website which puts your customers one click away from you.



Advertiser Index

B.T.S.	Pg. 8
Clover House	Pg. 9
Des Plaines Hobbies	Pg. 9
Excell Lubricants	Pg. 9
Fox Valley Models	Pg. 8
JT's Mega-Steam	Pg. 19
Midwest O&S Meet	Pg. 43
National Association of S Gaugers	Pg. 8
Railfonts.com	Pg. 9
Right On Track Models	Pg. 7
River Raisin Models	Pg. 8
S Scale Track Works	Pg. 7
Streamlined Backshop	Pg. 8
Tomalco Track	Pg. 8
Z-Stuff for Trains	Pg. 7



Yes, we now have a Facebook page to help keep you up to date on new products and ideas. And, even in an on-line magazine, we sometimes have more pictures than we can use so we'll post them on Facebook.

O&S Scale Midwest Show



It's September! Time to kick off your modeling season!

THE BEST OF O SCALE AND S SCALE IN ONE SHOW SEPTEMBER 18-20, 2020

WYNDHAM INDIANAPOLIS WEST 2544 EXECUTIVE DR. INDIANAPOLIS, IN

DEALER SETUP

Friday 4pm - 9pm

Saturday 7:30am - 9am

Room Rate \$125.00* per night (until 8/21/20) Reference O/S Scale Show when calling

***Based on availability**

317-248-2481 / 877-361-4511

SHOW TIMES

Saturday 9am - 5pm

Sunday 9am - 2pm

MEET OLD FRIENDS AND MAKE NEW ONES

Please print clearly – Detach and return lower portion with payment

Name: _____
(Exactly as you would like badge printed)

Business: _____
(Exactly as you would like badge printed - table holders only)

MAILING ADDRESS

CITY/STATE/ZIP

Phone: (____) _____

Email: _____

Make checks payable to: Model Railroad Resource LLC
Mail registration form to: 407 East Chippewa St
Dwight, IL 60420

Or register and pay online at:

Registration (Both days included) \$25.00 \$ 25.00

(Table holders must pay the \$25.00 registration fee)

Of 8 ft. Tables _____ \$50.00 ea/\$60 after 8/1/20 \$ _____

O Scale vendor S Scale vendor No preference

Number of add'l registrants _____ @ \$25 each \$ _____

(Please list below/Use back if needed/Spouse/Children 15 and under free)

Name: _____

Name: _____

Name: _____

TOTAL AMOUNT ENCLOSED: \$ _____

(No refunds after 8/20/20)

Electrical needed? Yes
(Subject to availability)

OSCALEMIDWEST.COM OR SCALEMIDWEST.COM

CONTACT INFO@OSCALEMIDWEST.COM OR CALL 815-584-1577 WITH ANY QUESTIONS

The parties, whose names appear on this registration form, have agreed to hold harmless all of the organizers, sponsors, Model Railroad Resource, LLC, The Wyndham Indianapolis West, and others, single and collectively, for any injury, harm, loss, damage, misadventure, or other inconvenience suffered or sustained as a result of participating in the Indianapolis O Scale Show and S Scale Midwest Show 2019 or in connection with any activity related to this event, whether of negligence by agents under their employ or otherwise.